



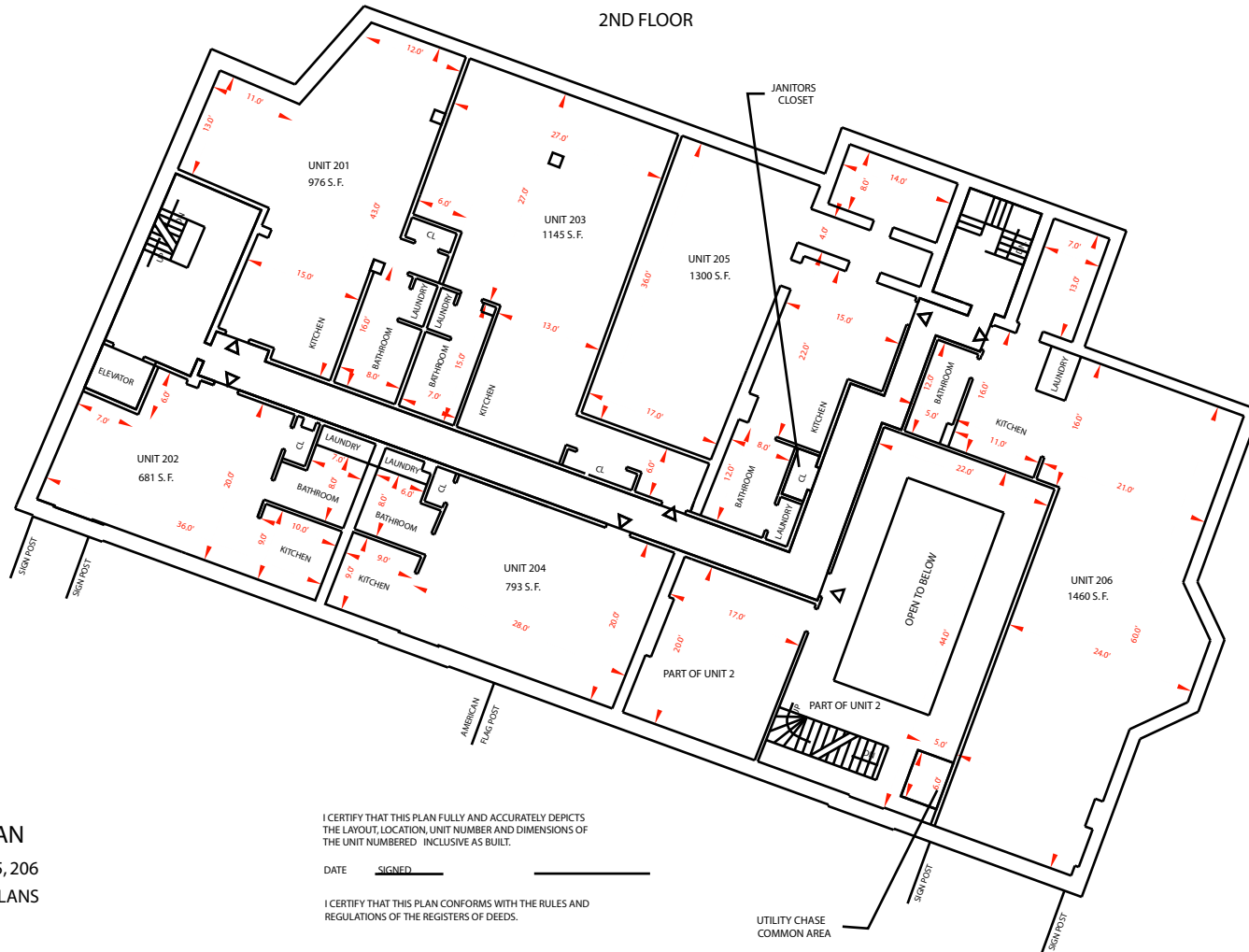


-  MAIN ENTRANCE
-  COMMON AREAS
-  CLOSET
-  EMERGENCY DOOR

2ND FLOOR



SECOND FLOOR PLAN

UNITS 201, 202, 203, 204, 205, 206
AS-BUILT CONDOMINIUM PLANS

EXCHANGE STREET LOFTS
CONDOMINIUM

LYNN, MASS.

SCALE: 1" = 10'
ANTONI SZERSZUNOWICZ
P.O. BOX 567

MARCH 5, 2004
PROFESSIONAL LAND SURVEYOR
MILTON, MA 02186

PHONE: (617) 686-5057

I CERTIFY THAT THIS PLAN FULLY AND ACCURATELY DEPICTS THE LAYOUT, LOCATION, UNIT NUMBER AND DIMENSIONS OF THE UNIT NUMBERED INCLUSIVE AS BUILT.

DATE SIGNED _____

I CERTIFY THAT THIS PLAN CONFORMS WITH THE RULES AND REGULATIONS OF THE REGISTERS OF DEEDS.

DATE SIGNED _____

I HEREBY CERTIFY THAT THIS PLAN SHOWS THE DESIGNATION OF THE UNIT AND OF IMMEDIATELY ADJOINING UNITS, AND THAT THIS PLAN FULLY AND ACCURATELY DEPICTS THE LAYOUT OF THE UNIT, ITS LOCATION, DIMENSIONS, APPROXIMATE UNIT AREA, MAIN ENTRY AND IMMEDIATE COMMON AREA TO WHICH IT HAS ACCESS, AS BUILT AT THE:

EXCHANGE STREET LOFTS CONDOMINIUM
70 & 92R EXCHANGE ST, LYNN MA

DATE ANTONI SZERSZUNOWICZ, PLS _____

