


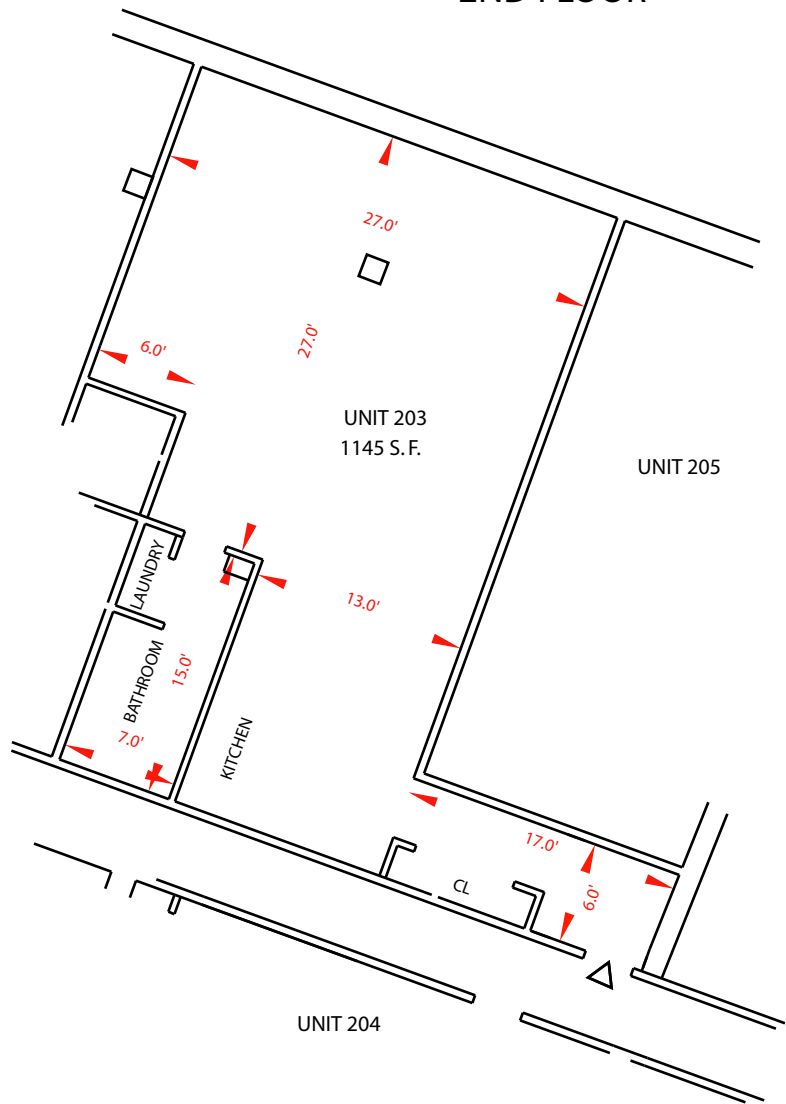


2ND FLOOR

-  MAIN ENTRANCE
-  COMMON AREAS
- CL CLOSET
-  EMERGENCY DOOR

UNIT 201



I CERTIFY THAT THIS PLAN FULLY AND ACCURATELY DEPICTS THE LAYOUT, LOCATION, UNIT NUMBER AND DIMENSIONS OF THE UNIT NUMBERED INCLUSIVE AS BUILT.

DATE SIGNED \_\_\_\_\_

I CERTIFY THAT THIS PLAN CONFORMS WITH THE RULES AND REGULATIONS OF THE REGISTERS OF DEEDS.

DATE SIGNED \_\_\_\_\_

I HEREBY CERTIFY THAT THIS PLAN SHOWS THE DESIGNATION OF THE UNIT AND OF IMMEDIATELY ADJOINING UNITS, AND THAT THIS PLAN FULLY AND ACCURATELY DEPICTS THE LAYOUT OF THE UNIT, ITS LOCATION, DIMENSIONS, APPROXIMATE UNIT AREA, MAIN ENTRY AND IMMEDIATE COMMON AREA TO WHICH IT HAS ACCESS, AS BUILT AT THE:

EXCHANGE STREET LOFTS CONDOMINIUM  
70 & 92R EXCHANGE ST, LYNN MA

DATE \_\_\_\_\_ ANTONI SZERSZUNOWICZ PLS

UNIT 203  
AS-BUILT CONDOMINIUM PLANS  
EXCHANGE STREET LOFTS  
CONDOMINIUM  
**LYNN, MASS.**

SCALE : 1"= 10'  
ANTONI SZERSZUNOWICZ  
P.O.BOX 567

MARCH 5, 2004  
PROFESSIONAL LAND SURVEYOR  
MILTON, MA 02186

PHONE: (617)686-5057

